



This Drawing Must Be Read in Conjunction with the Associated Arbicultural Report

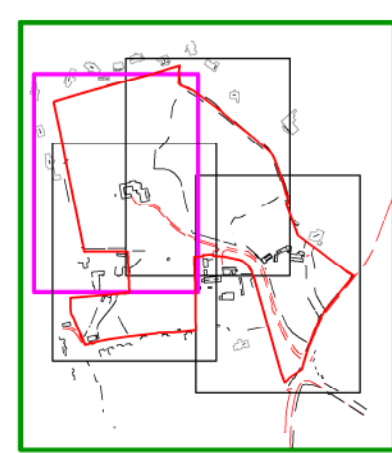
This Drawing is Copyright - © The Tree File Ltd 2021

Auburn Tree Impacts Plan North West 1/1 Scale 1:500 @ A1

This is a colour coded drawing that will be difficult or impossible to interpret if reproduced in black and white

Ashgrove House
Kill Avenue
Dun Laoghaire
Co Dublin

Tel. 01-2804839
Mob. 086-3819011
e-mail - thetreefile@eircom.net



- Trees Intended for Retention - Solid Green Crown Outline
- Trees Intended for Removal in Conjunction With Development Works - Broken Red Crown Outline
- Existing Ground Levels Illustrated By Spot Levels (Red Text)
- Proposed Levels (F.F.L.) Illustrated By Yellow Text, Services/Engineering/Drainage Levels Turquoise Text

- Tree Line
- Hedges
- Scrub and Thicket

- Category "A" Trees (Green Button)
- Category "B" Trees (Blue Button)
- Category "C" Trees (Grey Button)
- Category "U" Trees (Red Button)

Graphic Representation of Tree and Protection Zone

Canopy Extent
Cardinal Radii
Category Code
Stem Circumference

Canopy is drawn to account for any natural asymmetry or imbalance. Crown Representation is scaled to account for north, east, west and south radii.

Root Protection Area (RPA)
This area relates the "RPA" radius as defined in the Tree Survey Table and is measured from the tree centre. This area defines the preliminary Construction Exclusion Zone (CEZ) that must be protected by fencing from the potentially damaging effects of construction activity.

Client: Kinwest Limited
Scale: 1:500 Date: April 2021
Project: Tree Survey, Auburn, Malahide, Co Dublin.
Description: Tree Impacts Plan
Drawing Title: Auburn Tree Impacts Plan North-West